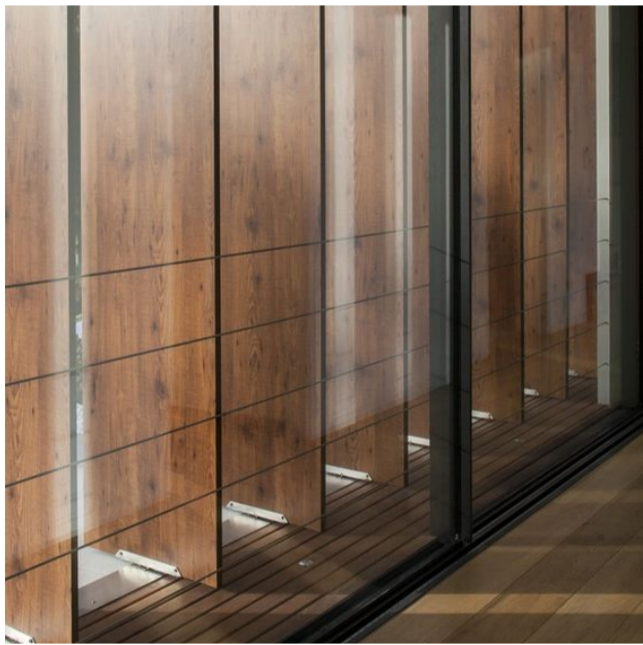




Metal Fascia and Frame



Hinged Louvres



Hinged Louvres and Curtain Glazing (interior view)

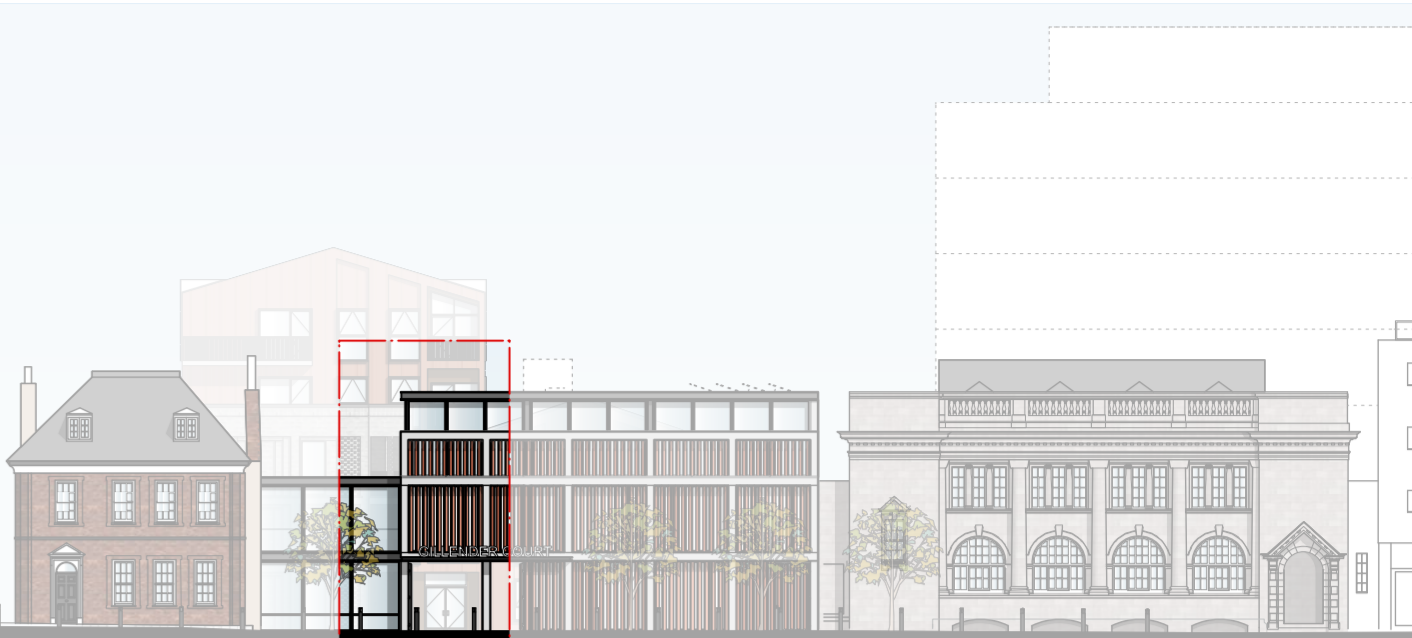


GRC Cladding

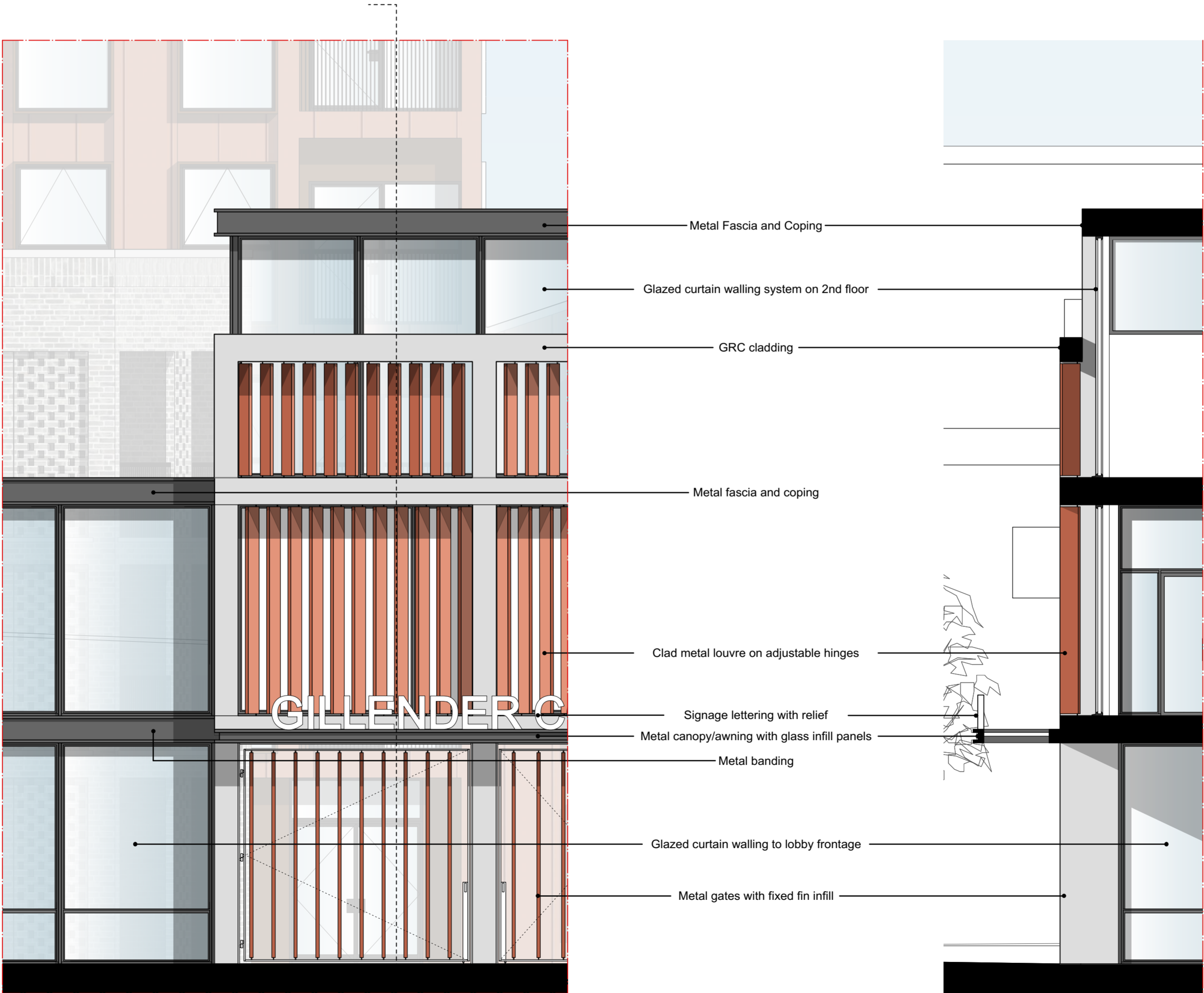


Gated Entrance

MATERIAL PRECEDENTS



West Elevation Key



PARTIAL WEST ELEVATION
ENTRANCE PASSAGEWAY GATES AND LOBBY

SECTION

rev	date	description
-----	------	-------------

stock
wool

The Pump House 19 Hooper Street
London E1 8BU 020 7264 8600
info@stockwool.co.uk

Client

Poplar Harca

Project

Leaside Business Centre

Drawing

Partial West Elevation
Entrance Material Details

Status

Planning

Scale 1:50 @ A1
1:100 @ A3
CAD File 3419-A-E--Elevations
Date 28.06.19
Drawn BS
Checked NC

Project no_Drawing no	Revision
PL[20]212	-